

# Cardonald Primary School

Telephone: 0141 883 9668

Term 1 Newsletter: August 2022



# WELCOME BACK

*We are delighted to welcome all the children and staff back to school for another exciting year ahead. We also would like to extend a warm welcome to all our Primary 1 children, new children across the school and our new members of staff.*

*This newsletter contains a number of important reminders and information for the year ahead. Please contact the school or visit our school website if you require any further information.*

*If you have any issues you wish to discuss with your child's Class Teacher or the Leadership Team please make an appointment via the school office.*

*Mrs Waddell (Depute Head Teacher) will have responsibility for P1-P4*

*Ms Mohd (Depute Head Teacher) will have responsibility for P5-P7*



Follow us on twitter: @CardonaldPri



<http://www.cardonald-pri.glasgow.sch.uk/>

*Visit our youtube channel*

## Reporting your child's absence



***You have a legal requirement to ensure your child is attending school on a regular basis. Attendance under 90% disrupts children's learning. If your child is absent you have a parental responsibility to inform the school by 9.30am via the***

### **Pupil Absence Reporting Line on 0141 287 0039**

*If your child is going to be absent please call the 'Absence Reporting Line'. If the reason for absence is personal or you feel the school requires more information about the absence please call the school directly. If you have not made contact, the school will try to contact you via text. If the school is unable to contact you, child protection procedures will be put in place to ensure the safety of your child. This will involve informing the Home School Support Worker. Your child's safety and well-being is our priority. We appreciate your support with this matter.*

*You can now also report absence via an **online form**. Please read the form on the next page for a detailed explanation of this.*

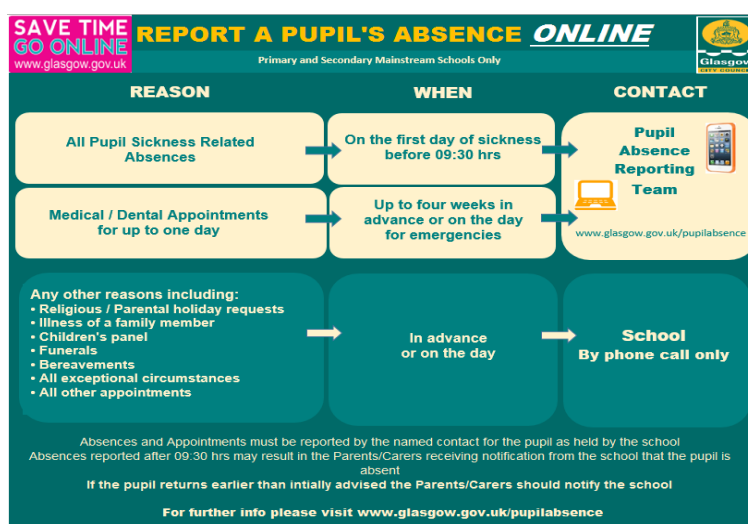
*This is the link for the online form:*

**<https://www.glasgow.gov.uk/pupilabsence>**

*If a child is persistently absent or late this matter will be investigated and appropriate action taken.*

## **Appointments**

If your child is required to attend an appointment during school time please inform the school office.



**Remember school begins at 9.00am**

**Support your child to be on time. Late-coming disrupts learning.**

## Groupcall

We have been using Groupcall to send texts, emails and information to those who have the Xpressions app. From now on we can only send these if you have provided an email address. This service is a valuable cost saving tool for the school to help keep you informed and relies on parents keeping their contact information up to date with the school. The Xpressions app in particular allows us to send information letters and attachments, reducing paper and is free of charge to the user. We would encourage you to **download the app by accessing <http://parents.groupcall.com/>**

## Breakfast Club

Breakfast Club is provided by Glasgow City Council catering staff between 8.00-8.45am every morning. Breakfast Club costs £2 for your first child and £1 thereafter for additional children you have.



Children who have registered with the local authority for free school meals are also entitled to a free breakfast.

## Healthy Snacks and Lunch



Lunch is free for P1-5 pupils and £1.90 for those in P6 and P7 who pay for lunch.

*Please ensure your child has a healthy snack and lunch. Children will not be allowed to have more than 1 snack at playtime. Encourage your child to make healthy choices for snacks. Remember **no fizzy** drinks please!*

***Pupils are also encouraged to drink water (plain) in the classroom to keep hydrated and refreshed. Juice or flavoured water is not allowed in the classroom.***

**Nuts or citrus fruits are not permitted in school as we have some children who have severe allergies to both of these types of food. Your support and understanding in this matter is greatly appreciated.**



## **School Uniform**

All pupils at Cardonald Primary wear the school uniform as we believe that it helps to promote a sense of belonging, pride and a positive image of the school in our community.

The school uniform is:

- Grey skirt or trousers
- Maroon jumper
- Maroon sweatshirt or cardigan
- White shirt and school tie
- White polo shirt
- Maroon reversible waterproof / fleece jacket/ blazer with school badge
- Red / yellow striped or checked dress may be worn in the summer



Please note that 'Hoodies' are not permitted unless they are P7 leaver's hoodies. Hoods are not allowed up in class.

For health and safety false nails should not be worn to school.

## **P.E Kit and Jewellery**

**P.E Kit must be brought to school.**



*Your child's class teacher will inform you of their PE days. On these days, children should come to school in black or grey shorts / joggers / leggings, a white t-shirt / polo shirt and wearing suitable footwear for PE.*

**No jewellery is allowed** to be worn in P.E for the health and safety of all children. Please ensure it is removed on gym days. Children will be unable to participate in P.E if wearing jewellery. For health and hygiene reasons staff cannot take out earrings for your child.

## **Indoor Shoes**

A pair of indoor shoes should be brought in to be kept in school. We will not routinely change footwear but it is helpful if children are in wellies or their shoes are wet/dirty to have the option to change shoes. These shoes could also be used for PE.

## **Lost Property**

*We regularly have pupils losing many items of their clothing. **Please ensure all clothing has your child's name clearly marked on it.***

### **Games Consoles/ Expensive Items**

*Games consoles, mobile phones and valuable items and toys should not be brought to school. They are not covered by our insurance and we are not responsible if anything happens to them.*



### **One Way system**

Parents are reminded that at Cardonald Primary we operate a voluntary one-way system round the oval. Please could all parents respect this and turn right when entering the Oval to avoid congestion during our busiest times first thing in the morning or at the end of the school day.



### **Drop & Go**

Thank you for your support last year with the Drop & Go system in the mornings. This greatly increased the level of safety for all our children entering the school each morning.

We would be grateful if all drivers continue to adopt the drop & Go approach this year as it reduces congestion at such a busy time and greatly increases visibility for pedestrians and drivers.



### **Dogs**

Dogs are not permitted within the school playground or school building with the exception of guide dogs.

### **Advice on Head Lice**

In the past, schools used to send out advice and information to parents about the detection and treatment of head lice. Alert letters are no longer sent out.

A very useful leaflet is available online at:

<http://www.healthscotland.com/documents/25.aspx>

Further advice can be given by staff at your local chemist

We would like to remind all parents and carers that Head Lice cannot be prevented but that regular checking ensures early detection and treatment. If you need further support or advice please contact the school who can refer you to the school nurse for further advice.

## **Medication**

Parents are also asked to inform the school of any particular medical requirements that their children may have. We have procedures for dealing with children with asthma and for administering medicines. Details of these are available on request.



## **Emergency Contact Information**

Annual data check forms will no longer be issued.



Annual data checks will be replaced with [Parents Portal](#). This is an umbrella scheme where all school documentation will be held, i.e permission slips, personal details, this can be accessed by parent/carers 24/7. More information to follow.

## **Parent Pay**

Everyone should now have parent pay log ins. Parent Pay is used for the following:

- Selecting your child's lunch
- Paying for anything in school eg: residential trips

## **Teams and Homework**

P2 – 7 have been using TEAMS for homework since we returned to school after lockdown in 2020. Last session we noticed a decreasing engagement with TEAMS and the homework posted on TEAMS. As a result, we have decided to return to jotters for homework. Class teachers will issue jotters and information about homework tasks. Homework will be given out on Monday and due in by Thursday.

You will still be able to log in to your child's class teams page which will now only have newsletters or information about school / class events.

## **IMPORTANT DATES FOR TERM 1**

### **Open Afternoon**

On Wednesday 21<sup>st</sup> September we will have a whole school open afternoon. There will be stall in the hall with opportunities for you to find out more about the school and what we do as well as an opportunity to visit your child in class. Visits to classrooms will be in half hour time slots over the afternoon (1:30 – 2pm or 2:10 – 2:40pm). More information to follow.

### **Photographer**

Tempest photography will visit the school on Thursday 8<sup>th</sup> September to take individual, family and class photos.



## Class Teachers 2022/23



Class	Teacher
P.1t	Miss Thomson
P.1w	Mrs Wilson
P.2	Mrs Gillies / Miss O'Connor
P. 3/2	Mr Walsh
P3	Miss Church
P.4	Miss Logue
P.5	Mr Elder
P.6/5	Mrs Miller
P.6	Miss Atkinson
P.7/6	Mrs Jardine
P.7	Mrs Norris / Mrs Mathie





## School term dates 2022 / 23

### August

- Monday, 15 August 2022 (Return date for Teachers & In-Service Day)
- Tuesday, 16 August 2022 (In-Service Day)
- Wednesday, 17 August 2022 (Return date for Pupils)

### September

- Friday, 23 September and Monday, 26 September 2022 (September weekend holiday)

### October

- Friday, 14 October 2022 (In-Service Day)
- Monday, 17 to Friday, 21 October 2022 (October Week)

### December - Christmas and New Year

- Schools close at 2.30 pm on Thursday, 22 December 2022
- Friday, 23 December 2022 - Tuesday 3 January 2023 (Christmas holidays)

### January

- Schools return on Wednesday 4 January 2023

### February mid-term break

- Monday, 13 February 2023
- Tuesday, 14 February 2023
- Wednesday, 15 February 2023 (In-service day)

### April - Spring Holiday (Easter)

- Schools close at 2.30 pm on Friday, 31 March 2023
- Monday, 3 April - Friday, 14 April 2023 (Spring Break)
- Schools return on Monday, 17 April 2023

### May

- Monday, 1 May 2023 (May Holiday)
- Thursday, 25 May 2023 (In-service day)
- Friday, 26 May 2023 and Monday, 29 May 2023 (May Weekend)

### June

- Schools Close at 1.00 pm on Friday 23 June 2023
-